

AD ELEV: 2713'

ILS X or LOC X RWY 16

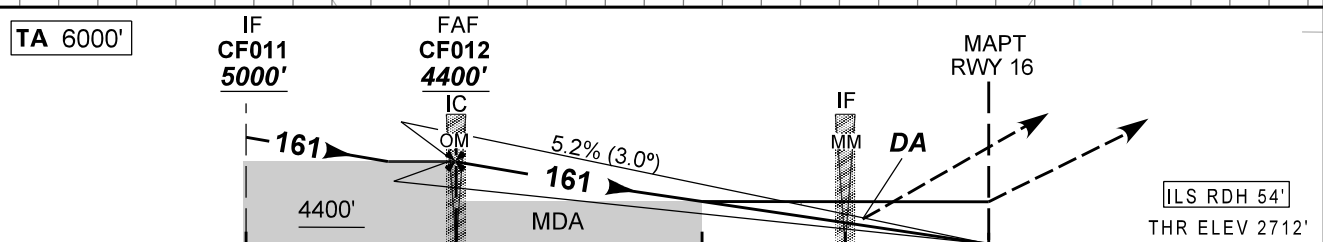
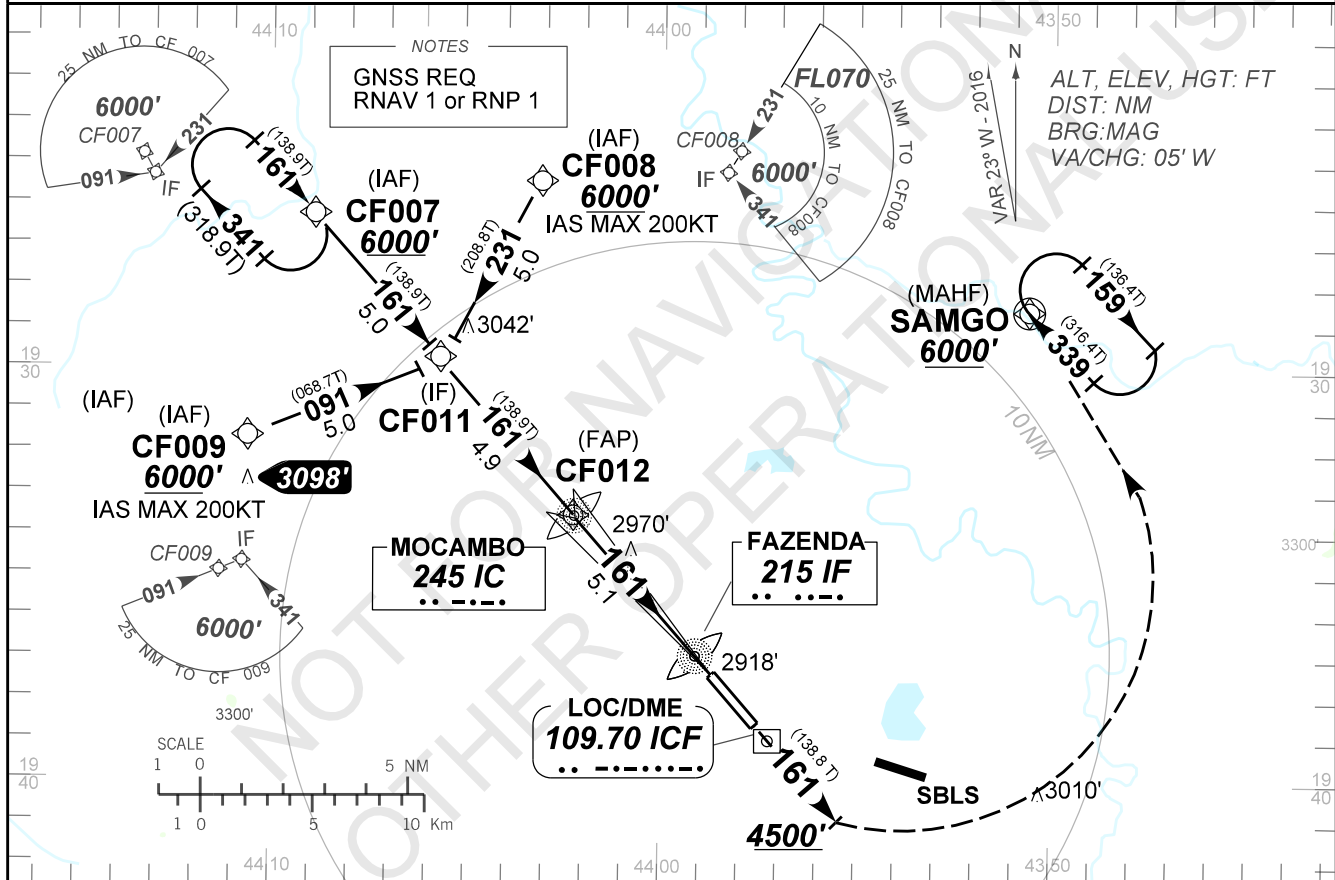
ATIS 127.85	APP BELO HORIZONTE 119.10 119.30 119.65 120.20 128.55 129.10 129.40 121.50	TWR CONFINS 118.20 121.50	GNDC CONFINS 121.90
LOC/DME ICF 109.70	FINAL CRS 102°	FAF: 4400'	ILS DA / (OCH): REFER TO MNM LOC only MDA / (OCH): 3220' (510')

APCH perdida: subir para **6000'** com gradiente * (ver MNM). Manter rumo **161** até cruzar **4500'**. Então, curvar à ESQUERDA direto SAMGO para espera.

Missed APCH: Climb to **6000'** with gradient * (refer to MNM). Maintain course **161** until passing **4500'**. Then, turn LEFT direct to SAMGO for holding.

RMK: 1) VIS RVR ALS 550m para APCH utilizando Diretor de Voo, Piloto Automático ou HUD.

1) VIS RVR ALS 550m for APCH using a Flight Director, Autopilot, or HUD.



TO THR 16 (NM)	10.0	5.1	1.4	0.6	0.0
TO ICF (DME)	12.1	7.2	3.5	2.7	2.1

FAF	4.0	3.0	2.0	1.4	1.0	RWY16	KT	090	110	130	150	170	190
4400	4041	3722	3404	3220	3085	ALT	FPM	500	600	700	800	900	NA
1687	1328	1009	691	500	372	(HGT)	FAF-MAPT	NA					

STRAIGHT-IN	CAT	A	B	C	D	E
CAT I	DA / (OCH)	2912' / (200')				NA
*Missed APCH Climb Gradient 5.0%	ALS/NO ALS/RVR ALS (m)	800 / 1200 / 700				
CAT I	DA / (OCH)	3012' / (300')		3062' / (350')		
*Missed APCH Climb Gradient 2.5%	ALS/NO ALS/RVR ALS (m)	800 / 1400 / 700		900 / 1600 / 850		
LOC	MDA / (OCH)	3220' / (500')				
	ALS/NO ALS/RVR ALS (m)	NIL / 1600 / NIL		NIL / 2300 / NIL		

CHANGES: NEW CHART.